

# WHAT IS BT4BE? (BRAIN-TRAINER FOR BIOERA)

- ▶ **BTI's software to replace BioExplorer on BioEra platform**
  - ▶ **Modular: apps add HEG, shadowing, games, others**
  - ▶ **Integrated: Assessment/training of HEG/EEG/Feedback**
  - ▶ **Easy to learn and use: Built-in Manual and Auto-Updates**
  - ▶ **Works with multiple amplifiers**
  - ▶ **Active programmer for problem-solving and upgrades**
- ▶ **Why replace BioExplorer**
  - ▶ **18 years old without major updates**
  - ▶ **Problems working with Windows10—especially updates**
  - ▶ **Additional protocols, feedback and services difficult to add**

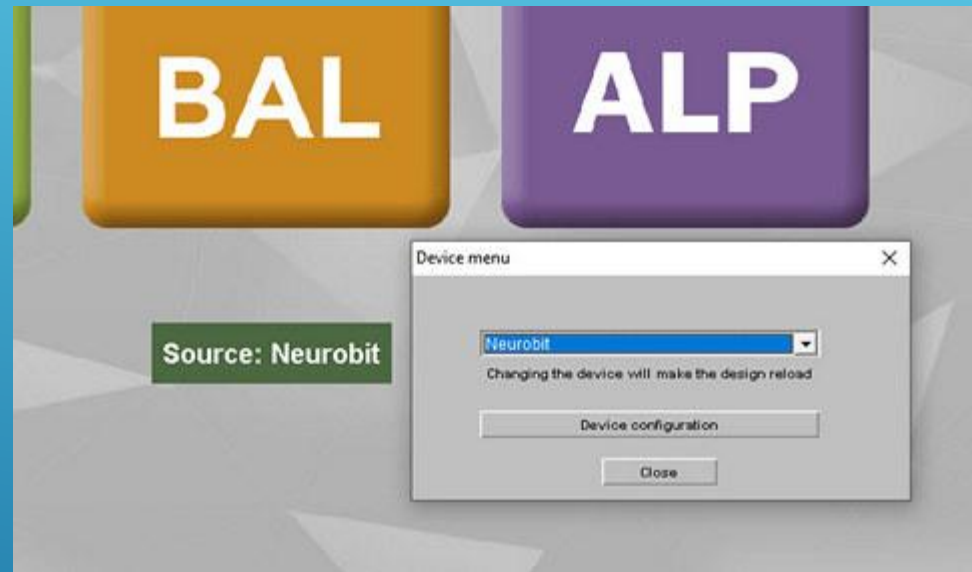
# DESIGNS MENU



- ▶ Brain-Trainer version (1.1.1 full release non-beta)
- ▶ Upper-right: Link for Online Manual
- ▶ Lower-left: Check for updates (Auto option)
- ▶ Upper-left: Green icon for Program Status
- ▶ Lower-right: Quick-Start of Saved protocol
- ▶ Lower right: Change location for saving files

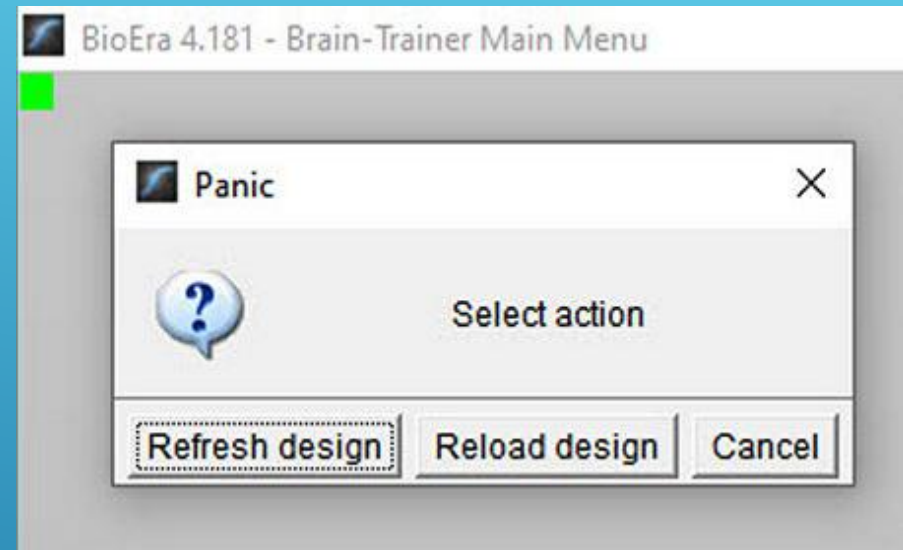
## SELECT YOUR AMPLIFIER

- ▶ Click amplifier name to get drop-down menu with options
  - ▶ Neurobit Optima, Pocket Neurobics Wiz, NeuroAmp, Simulator, Playback
  - ▶ Set configurations of amplifier
  - ▶ Color of button shows status of amplifier connection
- ▶ Only need to do one time.



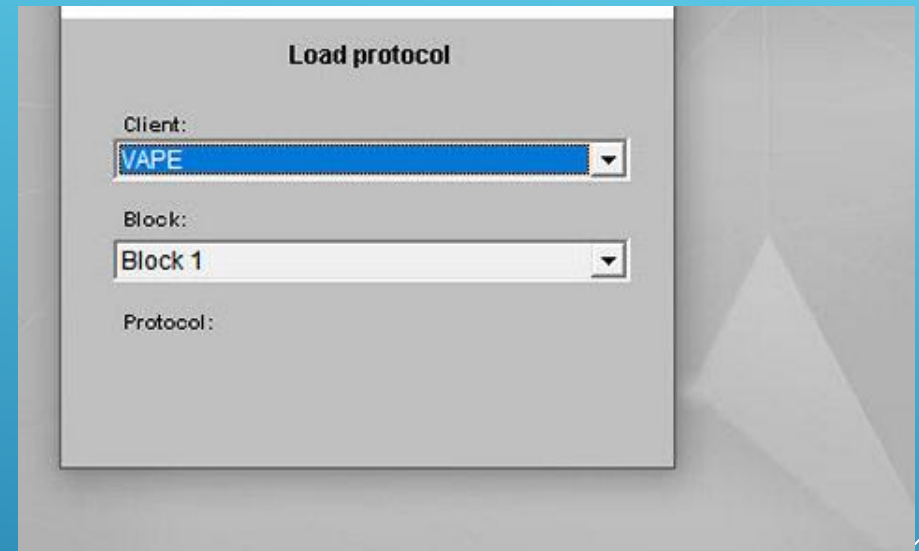
## PROGRAM STATUS ICON

- ▶ Shows status of connection (Green or Red)
- ▶ Resolves most lock-ups
  - ▶ Click once for Panic options when freeze occurs
    - ▶ Refresh last action
    - ▶ Reload screen



## THE QUICK-START FOLDER

- ▶ **Start saved Client Protocol directly from Open screen**
  - ▶ Click folder icon to open
  - ▶ Select Client
  - ▶ Select Block
  - ▶ Select Protocol
- ▶ Protocol opens with correct frequencies and selections
- ▶ Set feedback options and train



# SELECT TASK TO BE PERFORMED

- ▶ **What can BT4BE do?**
  - ▶ Record Trainers' Q assessment data
  - ▶ Train HEG/LIFE (with HEG 2.0 app).
  - ▶ Frequency training
  - ▶ Connectivity
  - ▶ Balance protocols
  - ▶ Alpha, Alpha Theta training



# RECORDING ASSESSMENT DATA

- ▶ **2 Standard Recording Options for Trainer's Q**
  - ▶ Record with 2C amp
  - ▶ Record with 4C amp
- ▶ **No artifact Recording 4C**
  - ▶ Artifact thresholds preset before recording
  - ▶ Software rejects epochs with artifact real-time
  - ▶ Record until 60 seconds clean data recorded.



# RECORDING ASSESSMENT DATA

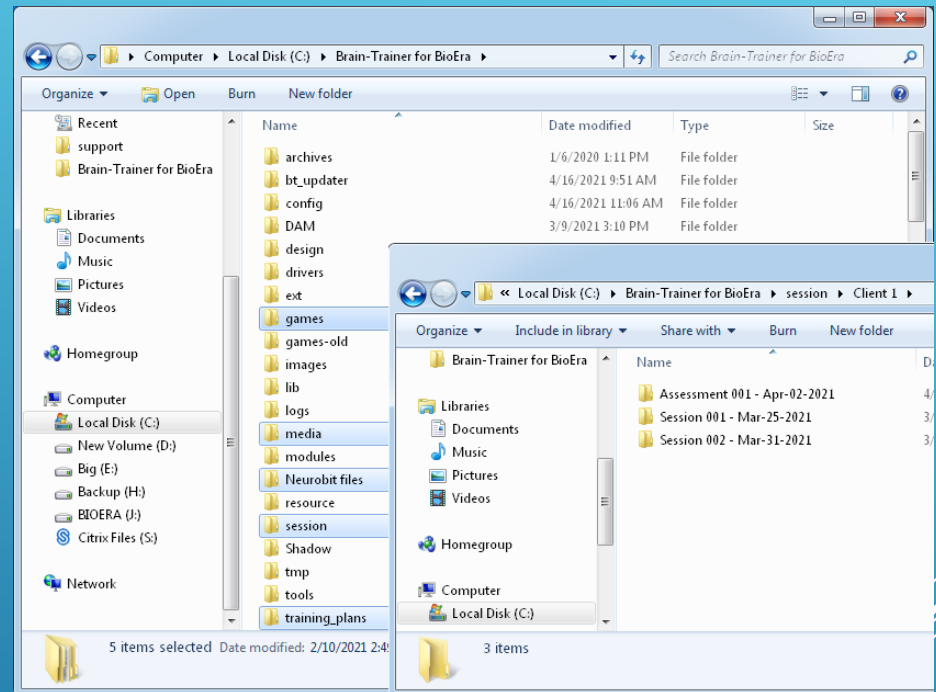
- ▶ Add/select Client
- ▶ Select recording step
- ▶ Auto-name file/allows record-over.
- ▶ 5-second count-down timer allows pause if signal problems appear.
- ▶ Pause after 60 seconds (or 60 clean epochs)
- ▶ Power spectrum views
- ▶ Oscilloscope view
- ▶ Signal quality displays





# SESSION DATA/FILES SAVED

- ▶ Files in Local Disk (C)
- ▶ Brain-Trainer for BioEra folder includes data, resources, training plans
- ▶ Each Client has folder in session folder
- ▶ Assessment data format for TQ auto-produced



# MAIN TRAINING SCREEN

- ▶ **Tools in upper-right**
  - ▶ **Matrix: Designs Menu to select new protocol**
  - ▶ **Folder: Access to any saved protocols**
  - ▶ **Disk: Save as protocol for use in training plan**
  - ▶ **Online Manual link**
- ▶ **Green icon in upper left.**
- ▶ **Lower-left ID's screen element cursor is over.**



# FRE OPTIONS

- ▶ **FRE1+:** combines inhibits and rewards for 1-4 channels (summed signals)
- ▶ **FRE2C:** allows separate challenge/feedback for each channel
- ▶ **FRE4C:** allows separate or same inhibits/reward for channels
- ▶ **FRE%1C:** FRE/Total (SMR or other band)
- ▶ 1+, 2C and 4C have specialty Preset protocols



# CON OPTIONS

- ▶ **Multiband Coherence 2C:** trains 4 bands up or down or both; with rocking
- ▶ **Sync 2C:** trains synchrony in 3 bands (delta, theta, alpha, SMR, gamma)
- ▶ **Multivariate Coherence 4C:** specialty protocol



# BAL OPTIONS

- ▶ **Alpha-Beta Asymmetry 2C:** trains symmetry in alpha and/or beta
- ▶ **Difference:** Trains ratios definable by trainer
- ▶ **Sum&Difference 2C:** definable by trainer



# ALP OPTIONS

- ▶ Alpha Up and Alpha Theta to train Alpha Peak Frequency or deep-states.




# RUNNING A TRAINING SESSION

- ▶ Open BT4BE to Design screen (from start-up or using Matrix icon)
- ▶ Click desired category and protocol; or
- ▶ If you have already saved the protocol, click the Folder icon, select Client, Block and Protocol



# TRAINING SCREEN CONTROLS

- ▶ Protocol Name
- ▶ Pause/Play/Stop control
- ▶ Clock: click to set session time
- ▶ Amplifier (green if connected/recognized)
- ▶ Wave icon: signal tester
- ▶ Feedback selection
- ▶ Slider icon: Feedback controls
- ▶ Notes icon: MIDI & click sound editor
- ▶ Speaker icon: MIDI on/off
- ▶ Option to Record session
- ▶ Design Set-up Options
- ▶ Contingent Chime Feedback



The screenshot displays the brain-trainer.com software interface for a training session. The main display shows the protocol name "FRE2C" and a large play button. Below the play button is a digital clock showing "00:00:00". A green bar labeled "PN Wiz" indicates the amplifier status. The interface includes a dropdown menu set to "MIDI-only", a "Record session" checkbox, and a "Design setup" section with options like "Copy CH1 settings onto CH2", "Preset protocols", and "[Chime threshold (advanced)]". On the right side, there are two vertical graphs: the top one shows "CH1 Inhibit 1" with a scale from 3 to 30 and a value of 80; the bottom one shows "1st Inhibit" and "2nd Inhibit" with a scale from 0 to 1.2.



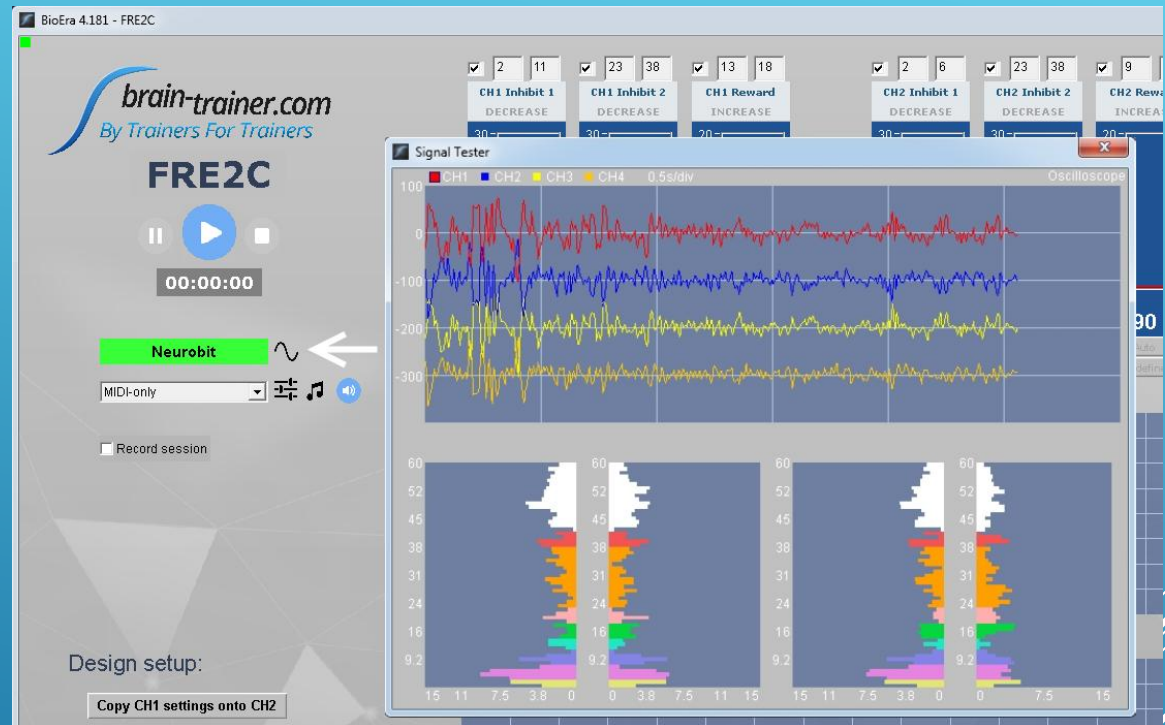
# CHANGE AMPLIFIER CONFIGURATION

- ▶ Click on Amplifier name
- ▶ Can change to another installed amplifier
- ▶ Can change amplifier configuration
  - ▶ Number of channels
  - ▶ Linked/Independent references
  - ▶ Click close
  - ▶ Wait for amp name to turn green again



# TEST SIGNAL BEFORE STARTING

- ▶ Click on waveform beside amplifier name
- ▶ When signal looks good, close window
- ▶ Ready to begin training.



# FEEDBACK OPTIONS

- ▶ Choose Option
  - ▶ MIDI only
  - ▶ Video with/  
without MIDI
  - ▶ Shadow (if app  
added)
  - ▶ Games (if app  
added)
- ▶ Setting feedback  
controls



# SAVING PROTOCOLS/TRAINING PLANS

- ▶ Open protocol and set frequencies and protocol type
- ▶ Click on disk icon, add or find client
- ▶ Select client, block and type in session information.
- ▶ Save.
- ▶ Can be reopened from folder icon.

