

## Optima 4 + Electrodes (or TC26) Settings

*You must always use a ground*

**Protocol: 4 Channels, Linked references L (A1 A2)**  
(Monopolar)

### SETTINGS

Optima 4 4C (L) Linked

### CONNECTION

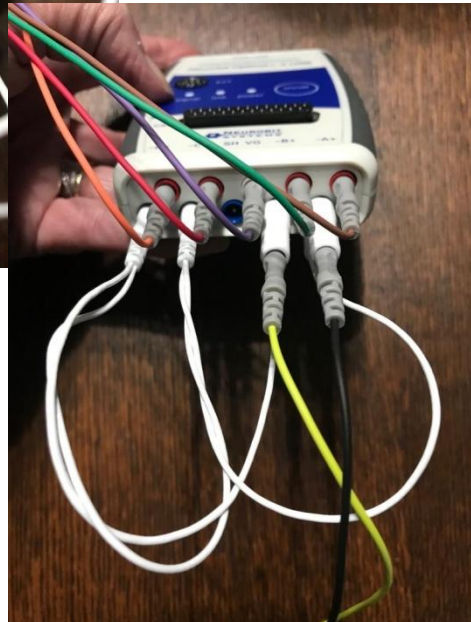
- Channel 1=A+
- Channel 2=B+
- Channel 3=C+
- Channel 4=D+

Jumper:

- Open=A-
- Open=B-
- Closed=C-
- Closed=D-

Reference electrodes:

- A1 = A-
- A2 = B-



## Optima 4 + Electrodes (or TC26) Settings

*You must always use a ground*

**Protocol: 2 Channels, Linked references L (A1 A2)**  
(Monopolar)

### SETTINGS

Optima 4 2C (L) Linked

### CONNECTION

- Channel 1=A+
- Channel 2=B+

Jumper:

- Open=A-
- Open=B-
- Closed ends not connected

Reference electrodes:

- A1 = A-
- A2 = B-



## Optima 4 + Electrodes (or TC26) Settings

*You must always use a ground*

### Protocol: 1 Channel, Reference (A1)

(Monopolar)

#### SETTINGS

Optima 4 1C

#### CONNECTION

Channel 1=A+

Reference electrode:

- A1 = A-

### Protocol: 1 Channel Reference (A2)

(Monopolar)

#### SETTINGS

Optima 4 1C

#### CONNECTION

Channel 1=A+

Reference electrode:

- A2 = A-

## Optima 4 + Electrodes (or TC26) Settings

*You must always use a ground*

**Protocol: 4 Channels, Independent references**  
(Monopolar)

### SETTINGS

Optima 4 4C (I) Independent

### CONNECTION

- Channel 1=A+
- Channel 2=B+
- Channel 3=C+
- Channel 4=D+

Reference electrode:

- 1 = A-
- 2 = B-
- 3 = C-
- 4 = D-

## Optima 4 + Electrodes (or TC26) Settings

*You must always use a ground*

**Protocol: 4 Channels, Common reference C (e.g. T4)**  
(Bipolar)

### SETTINGS

Optima 4 4C (L) Linked

### CONNECTION

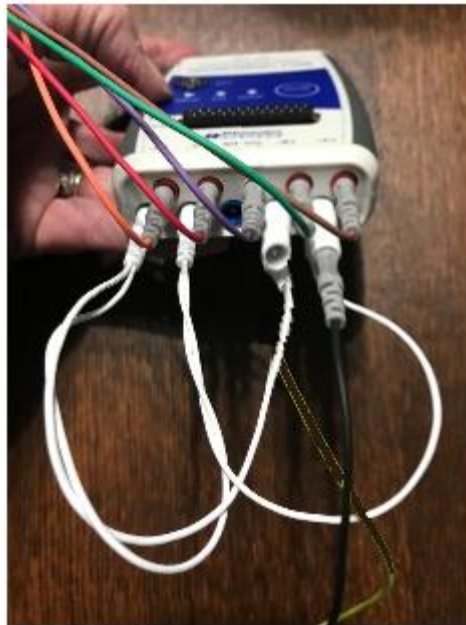
- Channel 1=A+
- Channel 2=B+
- Channel 3=C+
- Channel 4=D+

Jumper:

- Open=A-
- Open=B-
- Closed=C-
- Closed=D-

Reference electrodes:

- (e.g. T4) = A-



## Optima 4 + Electrodes (or TC26) Settings

*You must always use a ground*

**Protocol: 2 Channels, Common reference C (e.g. T4)**  
(Bipolar)

### SETTINGS

Optima 4 2C (L) Linked

### CONNECTION

- Channel 1=A+
- Channel 2=B+

Jumper:

- Open=A-
- Open=B-
- Closed ends not connected

Reference electrodes:

- (e.g. T4) = A-

